

Compliments of  
ERU Statistics Crew

NO.	Franklin County	FG-FGA	FT-FTA	REB	P	TP	A
24	Connie Goins	1-3	2-3	2	1	4	1
42	Paula Janes	-	-				
30	Sally Zimmerman	2-9	0-1	6	1	4	0
40	Janie Howard	0-3	0-0	0	1	0	2
20	Kelly King	1-3	0-0	0	0	2	0
44	Michelle Cox	1-2	0-0	5	1	2	0
12	Kitty Hines	0-0	0-0	0	0	0	0
34	Ann Hulette	-	-				
14	Marcie Rhody	-	-				
10	Darla White	-	-				
22	Karen Wilkins	-	-				
50	Jenny Caudale	-	-				
		-	-				
		-	-				
		-	-				
<b>TOTALS</b>		<b>5-20</b>	<b>2-4</b>	<b>13</b>	<b>4</b>	<b>12</b>	<b>3</b>

PERCENTS 25.0 50.0 0 TEAM REBOUNDS (NOT IN TOTAL)

NO.	Oldham County	FG-FGA	FT-FTA	REB	P	TP	A
24	Ann Estes	0-0	0-0	0	0	0	0
23	Viv Bohon	3-7	0-0	4	2	6	2
11	Nathy Stites	0-1	0-0	4	2	0	0
34	Rita Berry	6-9	1-2	4	0	13	1
14	Lori Oldham	1-1	0-0	1	1	2	1
22	Missy Shumway	0-1	0-0	1	3	0	0
4	Stella Wagner	1-3	0-0	1	0	2	1
25	Amy Wesley	-	-				
44	Mimi Olive	-	-				
13	Julie Prather	-	-				
21	Denise Carroll	-	-				
31	Debbie Cantrell	-	-				
		-	-				
		-	-				
		-	-				
		-	-				
<b>TOTALS</b>		<b>11-22</b>	<b>1-2</b>	<b>16</b>	<b>8</b>	<b>23</b>	<b>5</b>

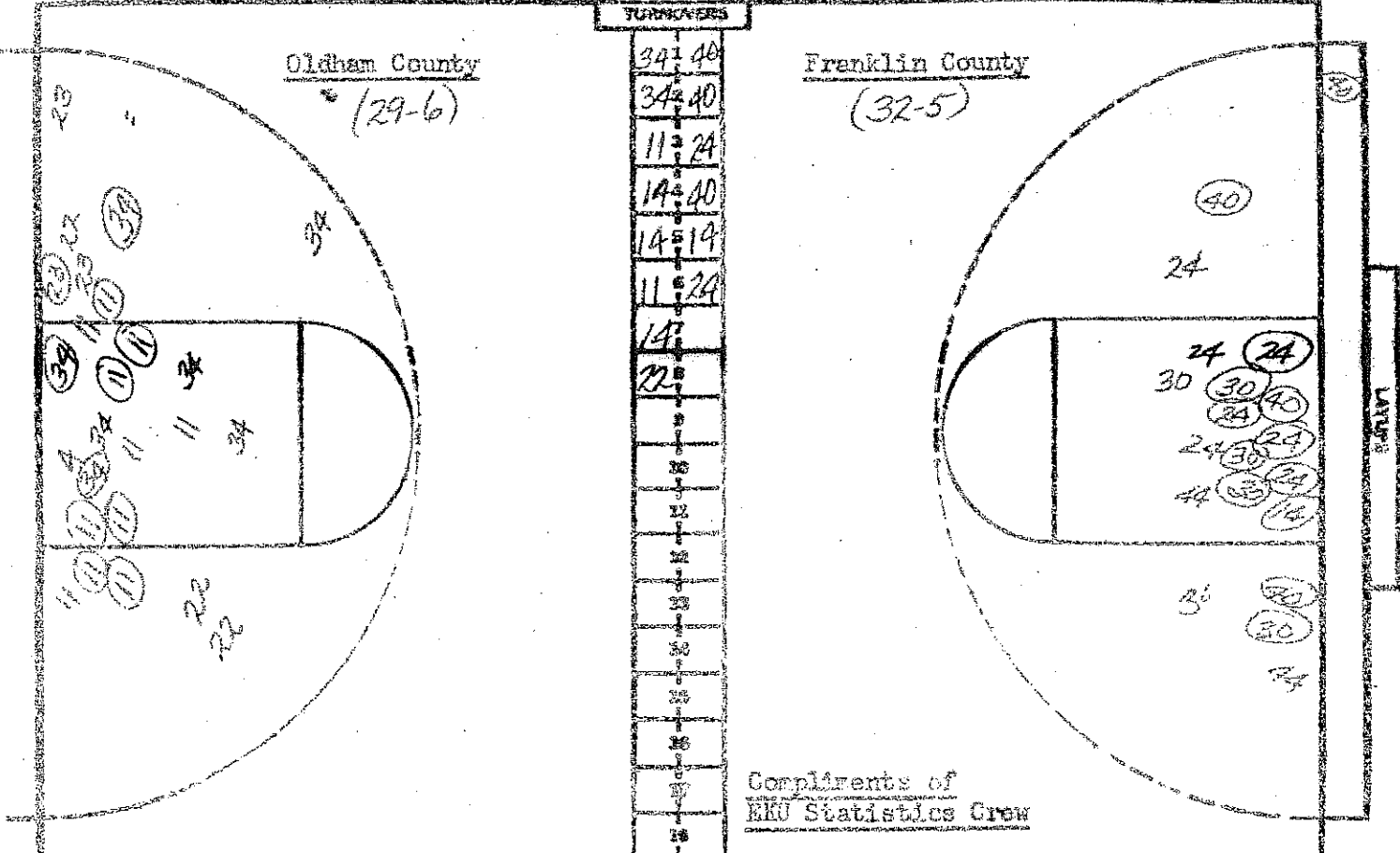
PERCENTS 50.0 50.0 0 TEAM REBOUNDS (NOT IN TOTAL)

Oldham County  
17-6 = 23

Franklin County  
10-2 = 12

SCORE BY HALVES

OFFICIALS Cathy Stovell & Jean Jansen  
ATTENDANCE Est. 7th Session



NO.	Oldham County	FS-FOA	FT-FYA	RE	P	TP	A
21	Ann Estes	0-0	0-0	0	0	0	0
3	Viv Bohon	4-10	0-0	7	5	8	2
11	Nathy Stites	7-12	0-0	9	2	14	1
1	Rita Berry	9-16	1-2	4	3	19	5
11	Lori Oldham	1-1	0-0	4	1	2	2
1	Missy Shumway	0-4	0-0	3	4	0	1
1	Stella Wagner	1-4	0-2	2	4	2	1
1	Ann Wesley	-	DNP				
1	Ann Olive	-	DNP				
1	Julie Prather	-	DNP				
1	Denise Carroll	-	DNP				
1	Debbie Cantrell	-	DNP				
		-	-				
		-	-	3 DB			
<b>TOTALS</b>		22-47	1-4	31	19	45	12

NO.	Franklin County	FS-FOA	FT-FYA	RE	P	TP	A
21	Connie Goins	5-10	6-8	8	3	16	2
42	Paula Jones	-	DNP				
30	Sally Zimmerman	6-15	0-1	7	3	12	1
10	Janie Howard	4-7	4-7	1	1	12	6
20	Kelly King	1-3	0-0	0	0	2	0
44	Michelle Cox	1-5	0-0	6	2	2	0
12	Kitty Hines	0-0	0-0	0	0	0	0
31	Ann Hulette	-	DNP				
11	Marcie Rhody	1-1	0-0	3	0	2	0
10	Darla White	-	DNP				
22	Karen Wilkins	-	DNP				
50	Jenny Gaudels	-	DNP				
		-	-				
		-	-				
<b>TOTALS</b>		18-41	10-16	25	9	46	9

PERCENTS      46.8      25      0      TEAM REBOUNDS (NOT IN TOTAL)

PERCENTS      43.9      62.5      1      TEAM REBOUNDS (NOT IN TOTAL)

Oldham County  
17-6-8-14=45

Franklin County  
10-2-17-17=46

TECHNICAL: SHUMWAY (OLDHAM CO.)  
OLDHAM (OLDHAM CO.)